



**CARVER COMMUNITY CENTER
PHASE I RENOVATION
PROCUREMENT AND PURCHASING**

INVITATION TO BID

Bid Due Date: February 1, 2019

Project Address: 700 Craig Street, Schenectady, New York

Project Description: MOCS is seeking qualified tradespeople to provide competitive bids for the repair and replacement of mechanical, electrical, and plumbing infrastructure to service a 14,900 square foot mixed-used community center. All construction divisions are encouraged to bid. Building consists of structural concrete slab and 8-inch CMU block interior cladded with stonework. Interiors consists of full-service kitchen, gymnasium, library, office suite, lounge, and locker room.

Submission of Bids: Miracle on Craig Street

P.O. Box 357

Schenectady, New York 12301

Miracleoncraigstreet@gmail.com

Bid Instructions: Bidders must schedule and complete a mandatory site visit and walkthrough prior to submitting bids. Pricing is to be provided as per proposed scope of work with bidder adjustments and specifications provided within bid documents. Bids may not be modified, withdrawn or canceled by bidder after receipt by Miracle on Craig Street. Bids must include prevailing wage compensation.

Questions and inquiries pertaining to the bid including scheduling of mandatory site visit may be directed as follows:

Travon T. Jackson | tjackson@bluelightdevelopment.org | (518) 279-6554

BLUELIGHT
DEVELOPING A NEW WORLD

Dated: November 14, 2019

PROJECT MEMBERS

- Property Owner
Miracle on Craig Street
Executive Director
Rosa Rivera

- Project Manager and Developer
BlueLight Development Group
President and Managing Director
Travon T. Jackson

- Legal Counsel
Albany Law Community Development Clinic
Staff Attorney
David Craft

PROPOSED SCOPE OF WORK

ITEM #	Description	Qty.	Unit
Mechanical Maintenance Items			
1	Repair/replace damaged heating system pipe & fitting	50	LF
2	Repair/replace insulation on heating system piping	100	LF
3	Replace HVAC control valves	8	EA
4	Repair fin tube radiation and covers	150	EA
5	System startup, testing & flushing	1	EA
Mechanical Upgrade Items			
6	Replace boiler with pair of new boilers	2	EA
7	Replace gym air handler and condensing unit	1	EA
8	Replace library air handler and condensing unit	1	EA
9	Install make-up air unit for kitchen	1	EA
10	Replace cabinet unit heaters	4	EA
11	Add energy recovery ventilators (ERV)	3	EA
12	Ductwork for air handlers and ERVS	1,000	Lbs.
13	Duct insulation for air handlers and ERVS	600	SF
Plumbing Maintenance items			
14	Startup,testing & troubleshooting of plumbing systems	1	EA
15	Replace 40-gallon electric hot water heater	1	EA
16	Replace water cooler	1	EA
17	Repair/replace damaged waste piping	40	LF
18	Repair/replace damaged domestic water piping	50	LF
19	Repair/replace courtyard drain	1	EA
Plumbing Upgrade Items			
20	Replace 100 gallon gas hot water heater	1	EA
21	Replace kitchen sink assembly	1	EA
22	Replace/install new bathroom fixtures	5	EA
Electrical Maintenance Items			
23	Start & test electrical system, replace faulty devices	1	EA
24	Repair lighting, replace tubes	1	EA
Electrical Upgrade Items			
25	Replace switch and main distribution panel	1	EA
26	Replace subpanels	4	EA
27	Replace outdoor lighting	4	EA

Items may be modified, added or removed as necessary and reasonable per bidder.

LF = line feet

EA = each

SF = square feet

SPECIFICATIONS AND SYSTEM OVERVIEW

Heating and Cooling System

Hydronic Heating System Zoned with Barber Coleman Hydraulic Actuators

Boiler Plant – Utica JC18000 gas fired hot water

Boiler Units – 2 JC400 and 2 JC500 boilers connected

Rated Efficiency: 80%

Air Handler – Trane Climate Changer (hot water coil and DX coil for cooling)

Condensing Unit – 20-ton Bryant Unit (exterior mount)

Electrical System

Main Disconnect – 400A Westinghouse Switch (240V)

Main Distribution Panel – Westinghouse CDP 3P/4W (400A @ 120/208V)

Main Disconnect Panel (400A @ 120/208V)

- Feeds 5 Westinghouse NQB subpanels and gym air conditioner
- 1 additional Westinghouse NQB 225A subpanel

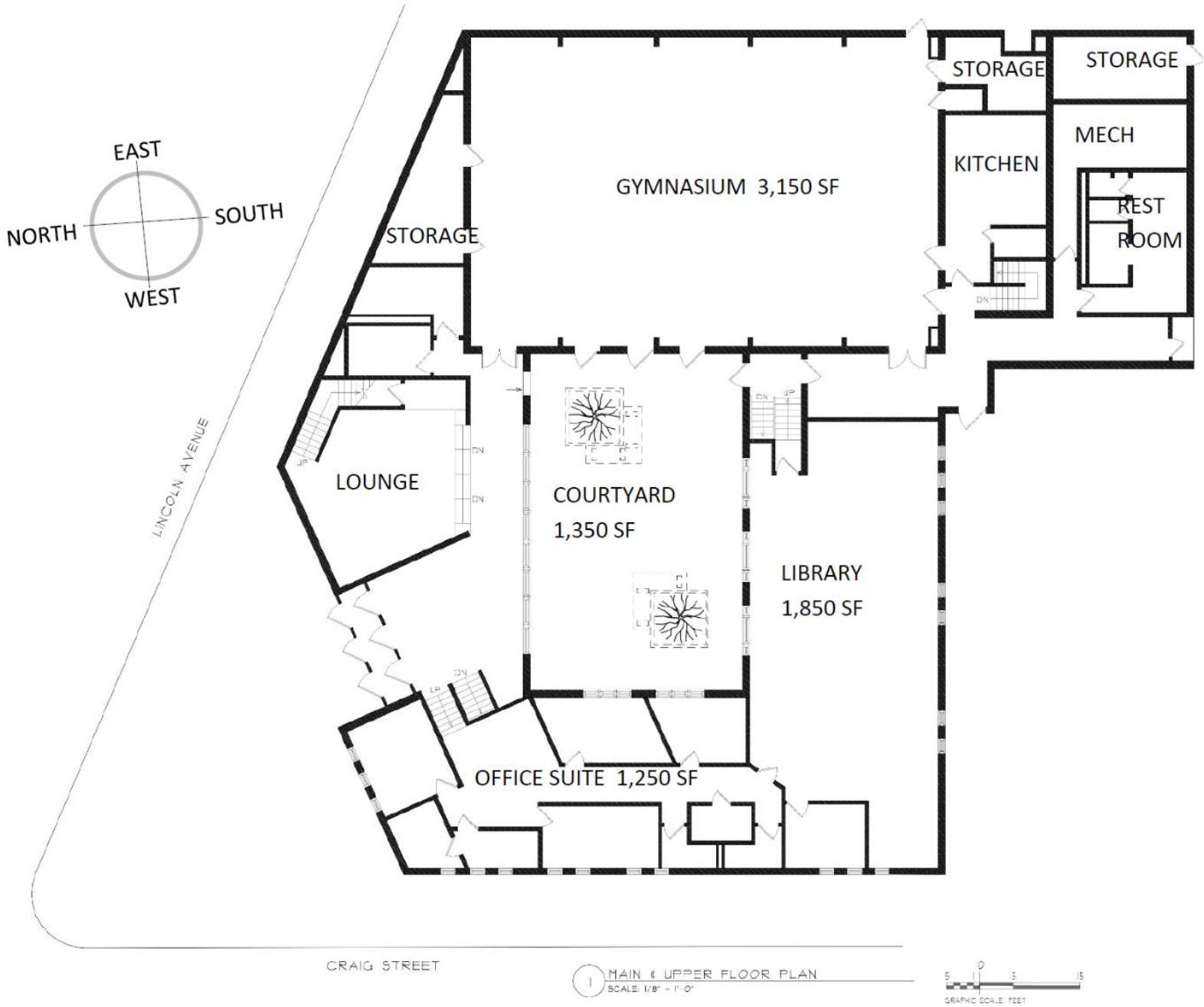
Plumbing

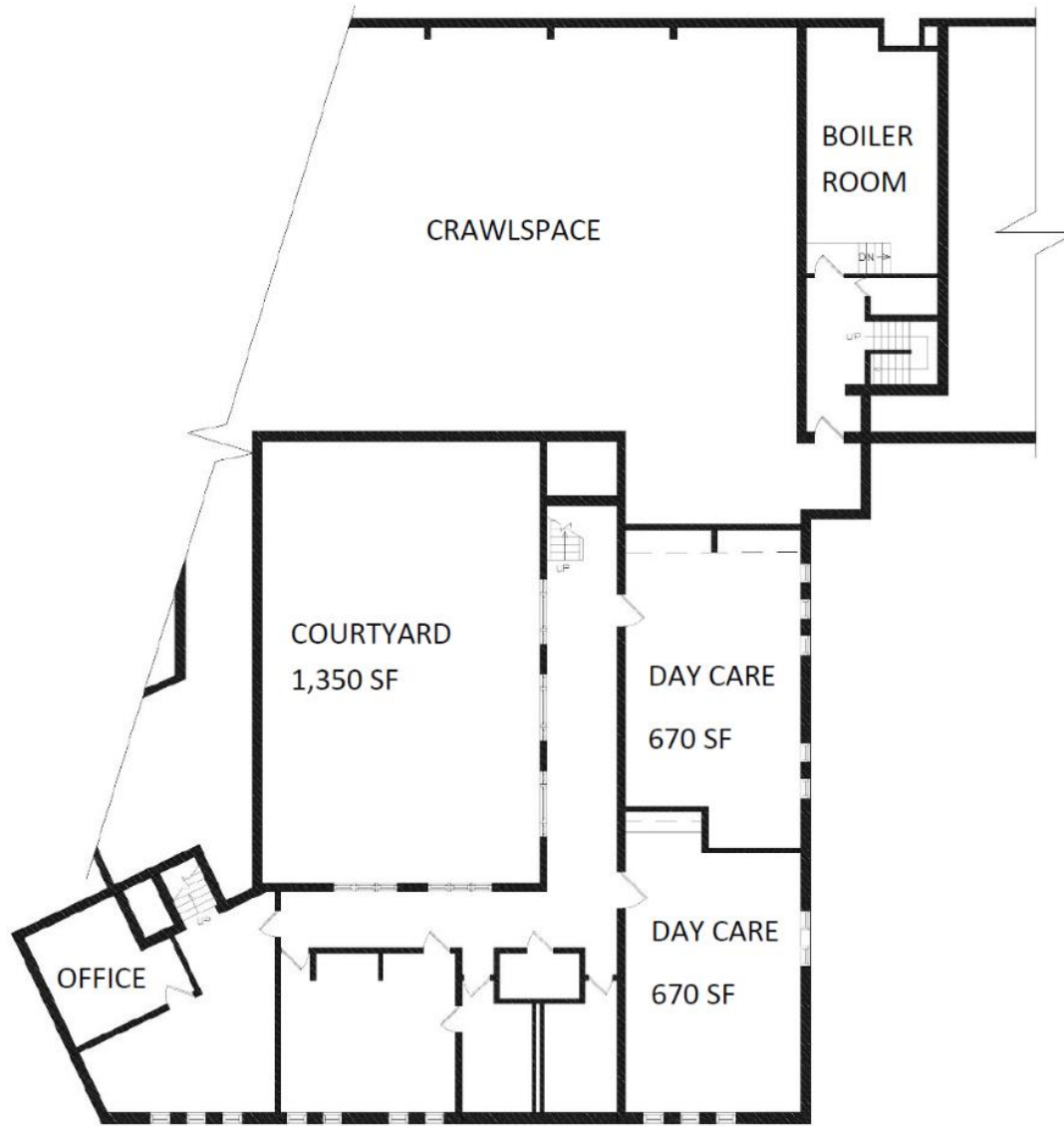
Hot Water Supply – GE electric storage tank heater and gas-fired Bradford White tank heater

Domestic Water – Copper piping with insulated hot water lines

Sanitary Waste – Two lines of cast iron piping with hub and spigot

DRAWINGS AND PLANS





2 LOWER FLOOR PLAN
SCALE: 1/8" = 1'-0"

